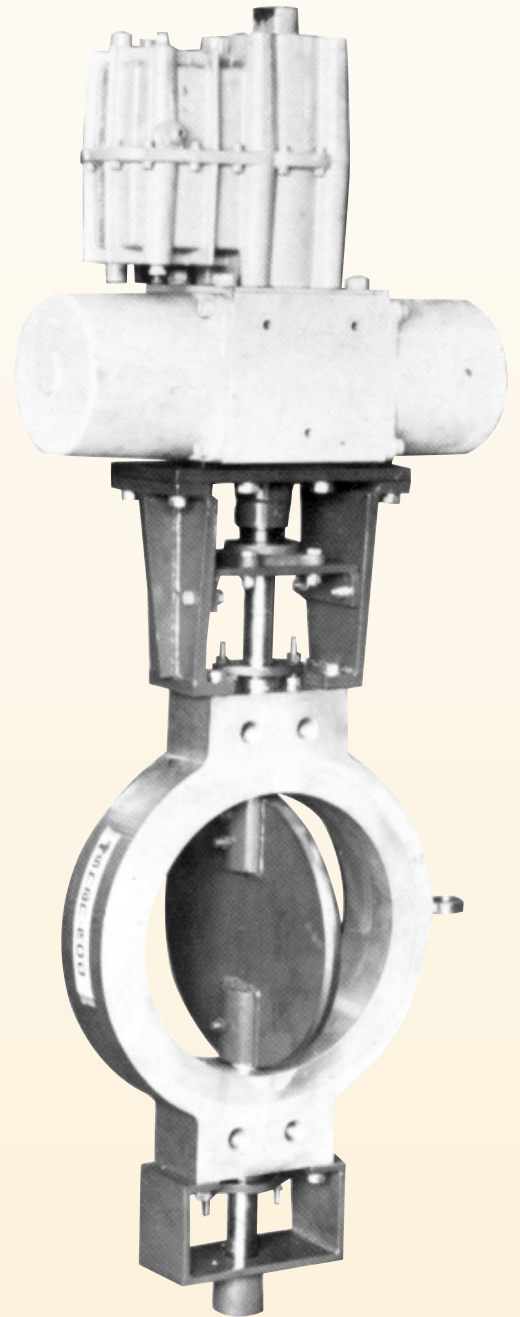


SHAN-ROD

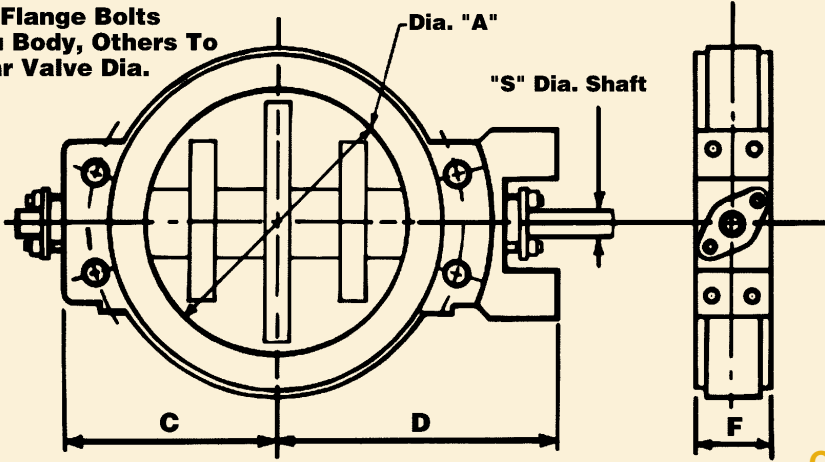
fabricated butterfly valves and dampers

BULLETIN 2500

Shan-Rod Fabricated **Solid Wafer Butterfly Valves** 2500 Series



Note:
2-4 Flange Bolts
Thru Body, Others To
Clear Valve Dia.



FEATURES

1. Face-to-face dimensions to your requirements.
2. Valve can be supplied with reduced port.
3. Extensions for temperature protection of instrumentation are available.

CONSTRUCTION AND MATERIALS

| Pipe Size | Dimensions In Inches | | | | |
|-----------|----------------------|-------|---------|-------|-------|
| | A | C | D | F | S |
| 4 | 4 | 4 1/2 | 7 | 2 | 1 |
| 5 | 5 | 5 1/4 | 7 9/16 | 2 | 1 |
| 6 | 6 | 5 3/4 | 7 15/16 | 2 | 1 |
| 8 | 8 | 6 7/8 | 9 3/16 | 2 | 1 |
| 10 | 10 | 8 3/8 | 10 9/16 | 2 | 1 |
| 12 | 12 | 9 5/8 | 12 1/16 | 2 | 1 |
| 14 | 13 1/4 | 11.88 | 12 3/4 | 2 3/8 | 1 |
| 16 | 15 1/4 | 13.12 | 14 | 2 3/8 | 1 |
| 18 | 17 | 14 | 15 | 3 1/8 | 1 1/4 |
| 20 | 19 | 15.25 | 16 1/4 | 3 1/8 | 1 1/4 |
| 24 | 23 | 19 | 20 | 3 1/2 | 1 1/2 |
| 30 | 29 | 22.75 | 23 3/4 | 3 3/4 | 1 1/2 |
| 36 | 35 | 26.5 | 27 1/2 | 4 | 1 1/2 |

Notes

1. 38"-72" Contact Factory For Dimensions.
2. Dimensions noted above for 78 Series valves. Consult factory for 76 Series dimensions.

| Construction | Standard | Optional |
|--------------------------|--------------------------|--|
| Body, Disc | Carbon steel | Corten, Aluminum, 304, 316, 317, 309, 310 & RA 330 SS. Carpenter 20, Titanium, Tantalum. |
| Flange Rating | 125/150 | 300, 600, 900, 1500 & 2500# ANSI |
| Shaft | 304 SS | Aluminum, 17-4 ph., 304, 316, 317, 309, 310 RA-330 SS, Carp. 20, Titanium & Tantalum. |
| Bushings | Carbon/ Graphite GR, BRZ | 300 Series SS, Stellite, TFE, Glass filled TFE. |
| Bearings (Outboard ball) | | Ball & roller. |
| Packing Follower | 304 SS | Same alloys as body. |
| Lantern Gland | Graphitar 304 SS | Same alloys as body. |

VALVE DESCRIPTION

BODY - Durable, solid ring type body is machined for accurate disc alignment. Standard body wall thicknesses vary according to static pressure and flange rating. Body is designed to withstand stresses imposed upon it, through pipe flanges.

DISC - Fabricated type are precision machined and specially finished tolerances prevent shaft distortion and disc misalignment. Ample metal is provided in the hub to maintain rigidity and strength of the disc and its components.

SHAFTS - One piece or stub shafts.

BUSHINGS - Standard bushing materials are carbon/graphite or GR.GRZ. Other types of bushing materials are available for specific applications.

FLANGE BOLTS HOLES - Holes are located in valve body where optimum strength requirements provide maximum support to the total valve assembly. Two or four body holes are dimensioned according to USAS Code flange standards depending on valve size.

OPERATING CONDITIONS

| | Std. | Optional |
|----------------------------|-----------|----------|
| Temp. °F. | 750 | 3000 |
| Max. Static Press. (psig) | *50 | 2500 |
| Shut-off Press. Drop (psi) | *Up to 20 | 300 Max. |

*Depending on size

PACKING - Graphite is standard material in either plain or purged type stuffing boxes. Purged boxes include lantern glands.

PACKING FOLLOWER - Provides uniform support to packing material and is precision machined to stuffing box.

PACKING FOLLOWER STUDS - St. Stl. studs are precision fit into valve body for perfect alignment of packing follower within stuffing box. They provide ample tensile strength requirements.

SHAFT PINS - Precision taper pins, press-fit into disc and shaft make this assembly vibration proof.

As we are continually developing our products, the design of Shan-Rod valves is subject to change without notice.